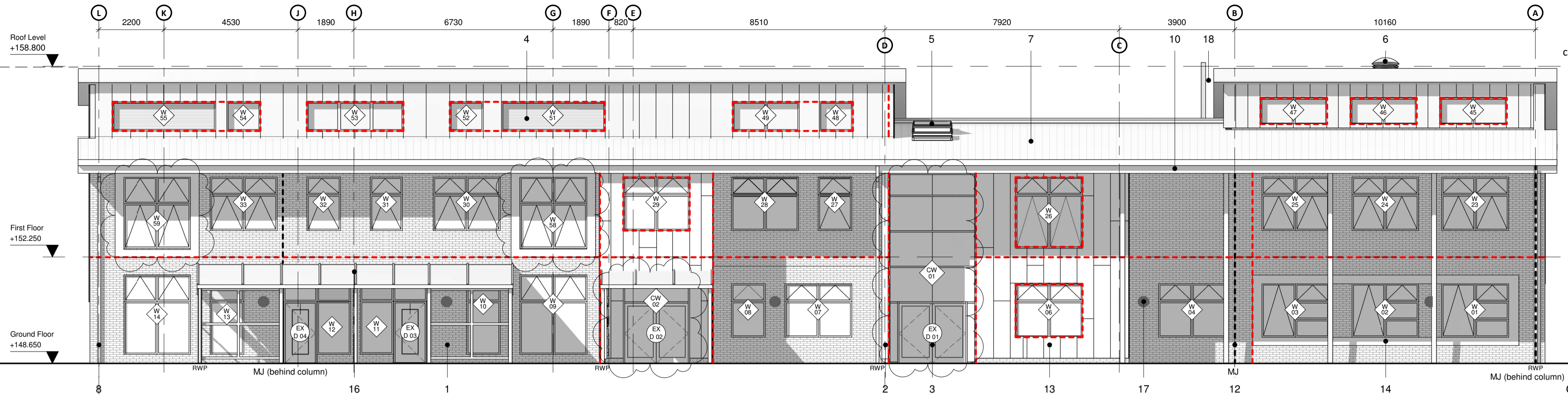


Do not scale from this drawing for construction or acquisition purposes. Responsibility is not accepted for errors made by others in scaling from this drawing. All construction information must be taken from figured dimensions only. All dimensions and levels must be checked on site and discrepancies between drawings and specification must be reported to GSSArchitecture.  
© Copyright GSSArchitecture

Ordnance Survey © Crown Copyright 2017. All rights reserved. Licence number GSS 100017356.

Map Data Copyright 2017 Google.



**1. North Elevation**  
**SCALE - 1 : 100@A1**

**Materials/ Finishes Key:**

- 1 - Brickwork (Stretcher Bond)**  
Material: Clay facing Brickwork  
Finish: Sandface/ textured  
Colour: Buff
- 2 - Render**  
Material: Coloured synthetic render  
Finish: Slipped finish  
Colour: Pantone Ref. 19-1526 TPX or similar

- 3 - Windows/ Doors/ Window Walling/ Curtain Walling**  
Material: Extruded aluminium frame  
Finish: Polyester powder coated  
Colour: Anthracite Grey RAL 7016  
Glazing: Double glazing with clear toughened Low E coating, clear toughened glass inner leaf, ceramic backed spandrel panels

- 4 - Louvred Panels**  
Material: Extruded aluminium  
Finish: Polyester powder coated  
Colour: Grey (to match window frames)

- 6 - Windcatchers**  
Material: GRP  
Finish: Gel coated  
Colour: Grey

- 8 - Rainwater Goods**  
Material: Aluminium  
Finish: Polyester powder coated  
Colour: Grey
- 10 - Fascias & Soffits**  
Material: Aluminium  
Finish: Polyester powder coated  
Colour: Grey
- 11 - Perforated Infill Panel**  
omitted August 18
- 13 - Rain Screen Cladding**  
Material: Aluminium panels  
Colour: Green RAL 6027

- 9 - Signage (School Name)**  
Material: Individual fret cut metal letters  
Finish: Stainless steel/ powder coated/ stove enameled/ Colour: Light Grey

- 12 - Columns**  
Material: Steel  
Finish: Painted  
Colour: Grey
- 14 - Window Surround**  
Material: High pressure laminated cladding panels  
Finish: Prefinished  
Colour: TBC
- 15 - Photovoltaic Panels**  
(Area 83.5m²)

- 16 - Canopies**  
Material: Extruded aluminium frame with aluminium rainwater goods  
Finish: Polyester powder coated/ Colour: Grey  
Roof: Glazing: Polycarbonate

- 17 - Wall Mounted External Lighting**
- 18 - Boiler Flue**  
Material: Stainless Steel
- 19 - Spandrel Panel**

C06 06/09/18 JT CC W58-61 shown as Type A7, former oriel windows, colours updated in notes, MJ revised where CW removed, CW profiles updated to match dwg. 3111, W18 & W18 updated with correct window type and louvres re added to ext. doors EXD07 & EXD10 and render colour updated

Rev. Date Drawn Check Description



EXCHANGE HOUSE, 494 MIDSUMMER BOULEVARD, MILTON KEYNES, MK9 2EA  
Telephone: 01908 255 620. Email: gss@gotch.co.uk, Web: www.gssarchitecture.com

Gloucester: 01452 525 019, Kettering: 01536 513 165, Harrogate: 01423 815 121, Newcastle: 01913 898 917

- KEY:**
- - - Line of 30min FR Cavity Barrier
  - - - Line of 60min FR Cavity Barrier
  - 30min FR Cavity Closers required around all openings and to top of cavity
  - Proprietary perpend vents at max 1350mm centres to be provided in accordance with the SIP manufacturer's recommendations above the DPC and above and below the first floor cavity barriers to all brickwork external walls to provide ventilation to the cavity. Additional vents at max 1350mm centres to be provided at heads of all brickwork walls to aid cavity ventilation in accordance with the SIP manufacturer's recommendations.
  - - - MJ Indicative location of movement joint in brickwork. Final positions to be confirmed with Structural Engineer. For locations of all movement joints refer to drawing nos. 53V006-GSS-V1- GF-DR-A- 0045 & 53V006-GSS-V1- GF-DR-A- 0045.

**CONSTRUCTION ISSUE**

**Project Title:**  
Abbey View Primary Academy

**Client:**  
Morgan Sindall

**Drawing Title:**  
Proposed Elevations

**File Number:** 53V006

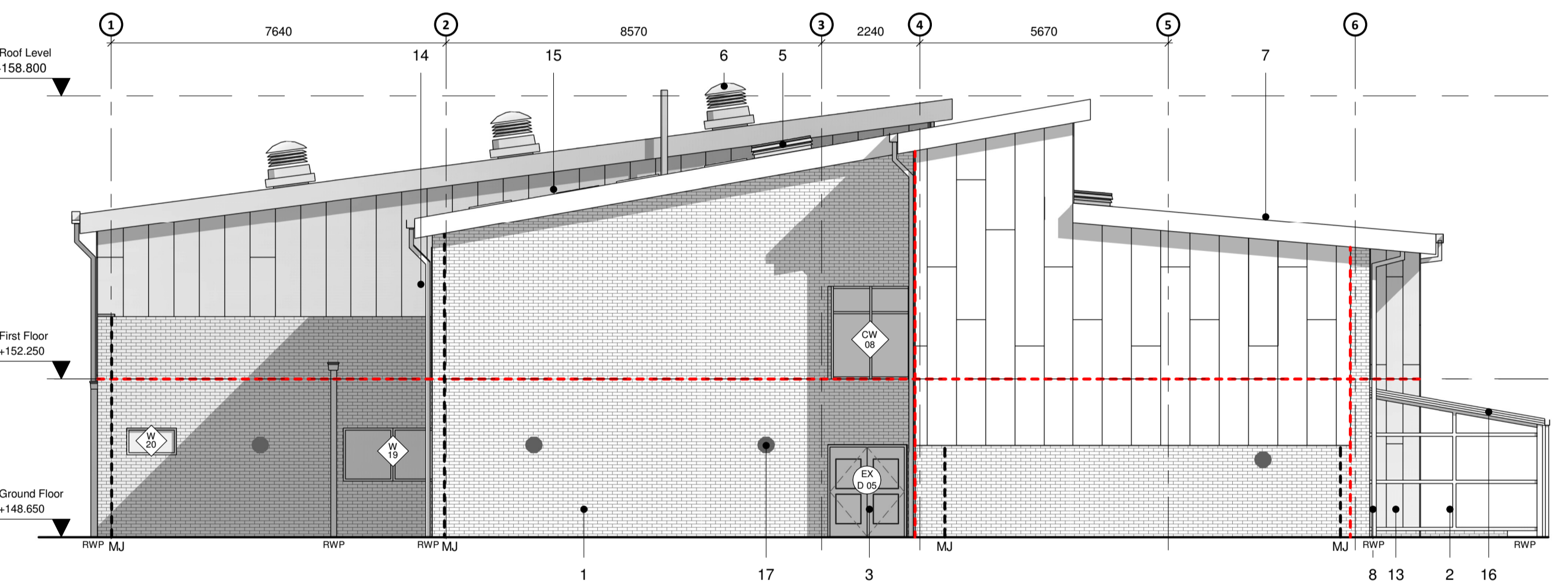
**Drawn By:** MU

**Checked By:** CC **Date:** 13/03/18

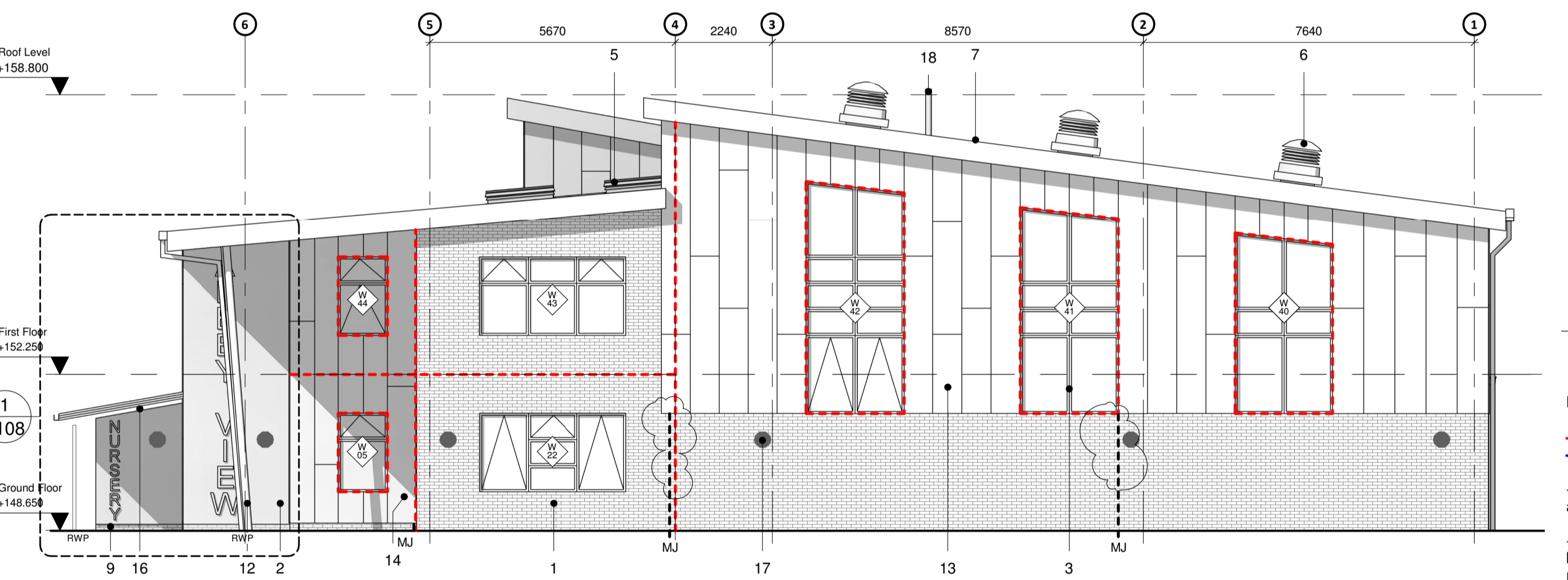
**Scale@A1:** As indicated **Rev:** C06

**Dwg No:** 53V006-GSS-V1-EL-DR-A-0055

**2. East Elevation**  
**SCALE - 1 : 100@A1**



**3. West Elevation**  
**SCALE - 1 : 100@A1**



**4. South Elevation**  
**SCALE - 1 : 100@A1**

